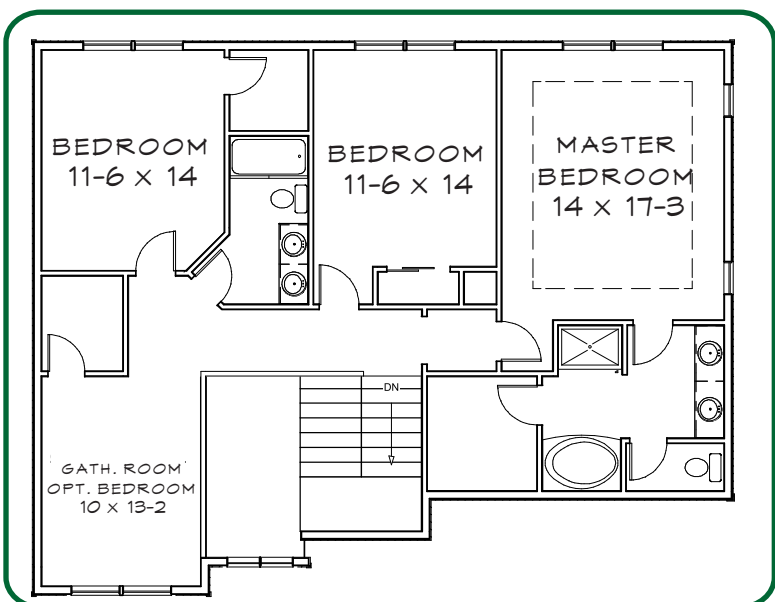
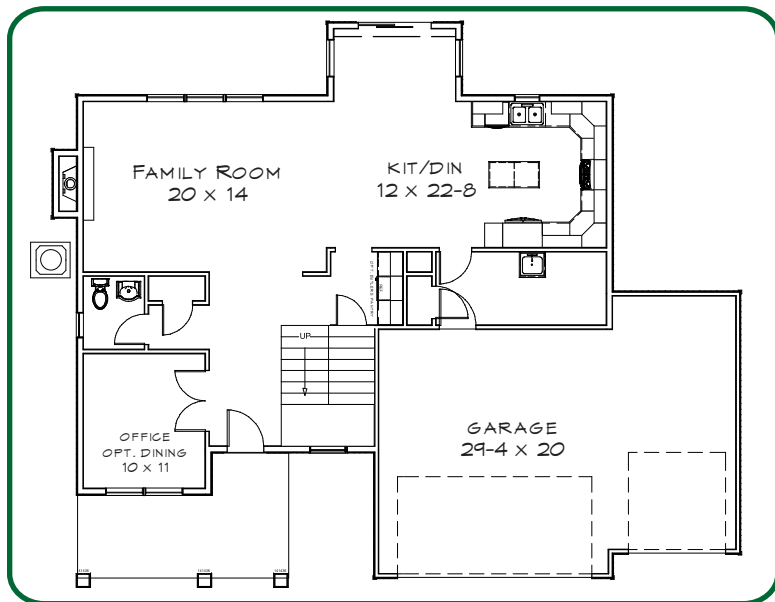


# The Stockton from \$call for details

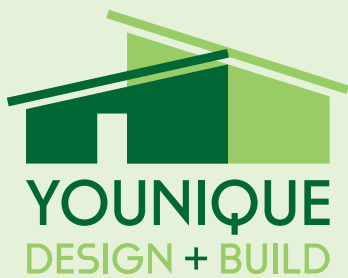


Multiple roof lines, charming stonework, and a covered porch all combine to give this home plenty of curb appeal. Inside, the two-story foyer opens to the right with a home office or possible dining room. An efficient kitchen offers an abundance of counter and cabinet space, plus a large breakfast room and a nearby family room will keep even the rowdiest guests at bay.

- 2,500 - 3,000 square feet
- 3-5 bedrooms
- 2 1/2 - 4 bathrooms
- full basement



we build on your lot...or ours!



# Quality Standard Selections

Younique Design + Build homes are built with distinctive quality construction, gourmet kitchen features, top of the line bathroom amenities, and other creative and innovative features. Browse through our standards listed below.

## Exteriors

- Stone or Brick Exteriors per print
- High Strength Double-4 Lap Vinyl Siding
- Architectural 30-Year Dimensional Shingle
- High Efficient Foundation Insulation Blanket on interior concrete walls
- Oversized Low-E/Argon Filled Gas Windows and Patio Doors for Superior Insulating Values meeting Energy Star Guidelines
- (2) - Exterior GFI Electrical Outlets
- (2) - Frost Proof Hose Connections
- 2 or 3 Car Insulated Garage Doors with Exterior Keypad and Openers Per Model
- Premium Insulated Entry Doors
- Address Stone or Plaque
- Concrete Driveway
- Exterior Concrete Sealed for Longevity and Durability

## Structural Detail

- 200AMP Electrical Service
- Poured Concrete Foundation with Exterior applied Sealant
- **2 x 6 Exterior Walls** with Zip-Wall
- R-24 Exterior Wall Insulation with Anti-Air-Infiltration System
- Exterior and Interior Walls 16" On-Center
- Floor Joists Calculated to Exceed Code Requirements - 16" On-Center
- Recycled engineered Huber Adantech Subflooring glued and nailed
- Re-Inforced Window Exterior Sealing System
- 96% + "Carrier" Brand Name Heating Equipment
- 13 - Seer "Carrier" Brand Name Air Conditioning
- 50 - 75 Gallon High Efficient Hot Water Tank per model
- ACCA Certified HVAC Installation
- ERV (Energy Recovery Ventilator) for improved IAQ (indoor air quality)
- 9' First Floor Walls
- 8' Second Floor Walls
- All Drywall Glued and Screwed
- 5/8" Drywall in Garage where Required
- Garage Completely Dry-Walled
- Easy Care Wire Shelving
- All Hot and Cold Plumbing Installed in Pex
- All Vents Exhausted to Exterior

## Kitchens and Bathrooms

- Choice of Quality Cabinetry
- Choice of Stains Included
- Choice of Hardware on Cabinetry
- Microwave with Hood, Dishwasher and 1/3 Horsepower Garbage Disposal
- Stainless Steel Drop-In Double Bowl Kitchen Sink
- Stainless Steel Pull-Out Kitchen Faucet
- **Granite** Counters in Kitchen
- Pedestal and Matching Toilet in Powder Room
- Raised Vanity Heights in Master Bathroom
- Double Bowl Sinks in Master Bathroom per Model
- Marble Counters with Integral Bowls in baths
- Chrome Lever Faucets
- Oversized Tub in Master Bathroom
- Stand-Up Shower in Master Bathroom per Model
- Plate Glass Vanity Mirrors
- Ceramic Tile in Bathrooms and Laundry Rooms
- Wood Flooring in Kitchen
- Energy Star Bathroom Fans with Extreme Noise Reduction

## Interior Details

- Choice of 2 - 3 - 4 - 6 Panel Interior Doors
- Nickel Door Hardware
- 4 1/4" Traditional Base Trim on 1st Floor
- 4 1/4" Traditional Base Trim on 2nd Floor
- 3 1/2" Traditional Casing around all Windows
- Shoe Molding on all Ceramic and Wood Flooring Areas
- 36" Heatilator Sealed Gas-Burning Fireplace with Electronic Ignition for Higher Efficiency
- Fireplace with Designed Wood and Stone Surround
- All Bedrooms Wired for Ceiling Fans
- Energy Star Appliances per model
- Light Fixture Allowance per Model
- Wood Flooring in Entry, Main Floor Hall, and Powder Room

Younique Design + Build offers many opportunities for additional personal touches. Is there something you have always wanted, please let us know so we can incorporate your ideas into your new home.